

ATTACHMENTS LV



COMPATIBLE SYSTEMATIX



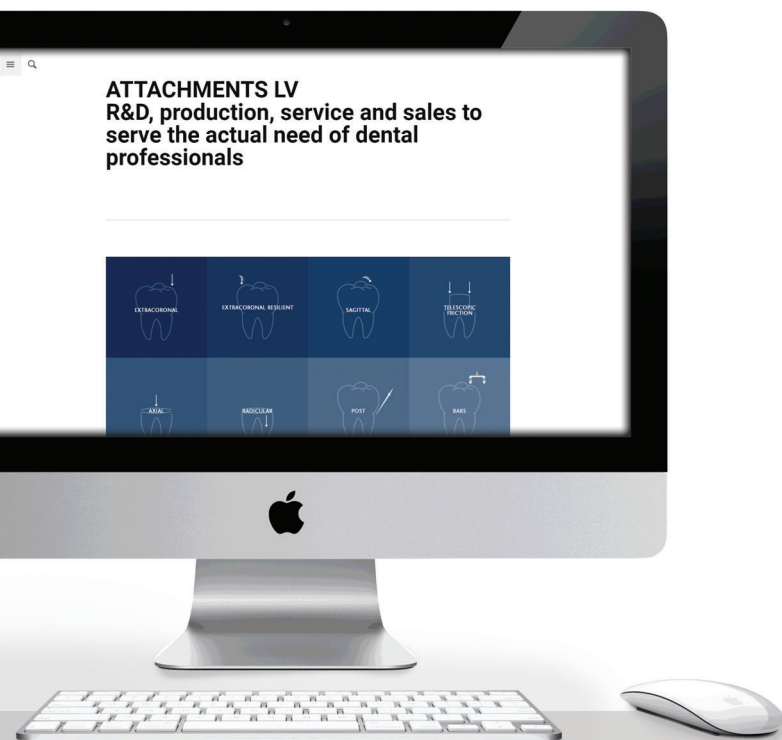
ENGLISH VERSION

"a smile makes the difference"

R&D, Production, Service and Sales assured from the same company to serve the actual need of dental Professionals



CE0546



Attachments LV Website

<http://lvattachments.nobilmetal.com/>

Your Web-Catalogue with all necessary technical, CE and ISO information, easy to download.

CE / ISO

Nobil Metal S.p.A. is ISO 13485 certified.
All LV Attachments are CE marked.

INTERNATIONAL COMMERCIAL CONTACT

For all international commercial information, please contact the Nobil Metal export department:
export@nobilmetal.it
Tel. +39 0141 93 38 11
Fax +39 0141 94 38 40

TECHNICAL SUPPORT

For all technical support, please contact Nobil Metal at: **attachments@nobilmetal.it**

All Attachments LV STL Files for exocad, 3Shape and dental wings can be downloaded from
<http://lvattachments.nobilmetal.com/>



PHOTO-SHOOTS

Have you made a nice reportage with photo-shoots of a clinical restauration, send us a copy, it may be published in an upcoming edition of Nobil Metal's Magazine. Articles with:

- ✓ Nobil Metal Alloys and Solders
- ✓ DIVA & GLAM Ceramics
- ✓ Attachments LV
- ✓ SINERGIASCAN
- ✓ SINERGIAPRINT
- ✓ Prosthetic and aesthetic solutions



INDEX

ATTACHMENTS	EXTRACORONAL	<u>LV SP2</u>	pag. 4
		<u>LV SP3</u>	pag. 5
		<u>LV SFE</u>	pag. 6
		<u>LV VER mini & standard</u>	pag. 7
	EXTRACORONAL RESILIENT	<u>LV CER</u>	pag. 8
	SAGITTAL	<u>LV SAG mini & standard</u>	pag. 9
	TELESCOPIC FRICTION	<u>LV KON</u>	pag. 10
		<u>LV KON plus</u>	pag. 11
	AXIAL	<u>LV SP2</u>	pag. 12
		<u>LV PAL</u>	pag. 13
		<u>LV SFE</u>	pag. 14
		<u>LV SFE 50% System</u>	pag. 15
		<u>axial & radicular</u>	pag. 16
		<u>extracoronar & abutments</u>	pag. 17
	RADICULAR	<u>LV SFE</u>	pag. 18
	BAR	<u>LV HOR mini & standard</u>	pag. 19
		<u>LV OCAD mini & standard</u>	pag. 20 - 21
		<u>LV BAR mini & standard</u>	pag. 22
		<u>LV CLI</u>	pag. 23
	CONNECTORS	<u>LV JV - LV FIX mini & standard</u>	pag. 24
	CAD / CAM	<u>LV CI</u>	pag. 25
SINGLE PARTS & ACCESSORIES		<u>LV SP2 / LV SP3</u>	pag. 26 - 27
		<u>LV VER / HOR / OCAD</u>	pag. 28 - 29
		<u>LV SAG</u>	pag. 30
		<u>LV PAL / SFE</u>	pag. 31
		<u>LV SFE 50%</u>	pag. 32
PERIPHERAL	POST	<u>LV PER</u>	pag. 33
	Nobil Metal PRODUCTS		pag. 34
ALLOYS / SOLDERS & MATERIALS	Nobil Metal Alloys, Solders & Plastics		pag. 35

EXTRACORONAL

LV SP2

Extracoronaral M2 Spring Pin Attachment System
M2 | H: 2.70 mm | ø Head: 1.88 mm

Improved for better casting results



■ Cast-on Technique NP



■ Cementing Technique NOBIL FIX



■ Cast-on Technique PM



Cementing Technique
NOBIL FIX



Acrylic longitudinal
retention



Soldering or cast-on
Technique PM



Cast-on Technique NP



Acrylic circular retention

- SP-101-22
- SP-101-26
- SP-101-25

- SP-101-32
- SP-101-36
- SP-101-35

⚠ Order numbers of complete Attachments LV SP2

- SP-101-72
- SP-101-76
- SP-101-75

- SP-101-62
- SP-101-66
- SP-101-65

- SP-101-42
- SP-101-46
- SP-101-45

Each attachment is composed of 2 burn-out patterns (45°, 60°), the female and a complete male.
H: 3.80 mm | ø: 3.40 mm

NOBIL GRIP

The use of **NOBIL GRIP**, an anaerobic adhesive, on the threads of the LV SP2 spring pins, will avoid a possible spontaneous gradual loosening. **NOBIL GRIP** is non-toxic and does not dissolve. Clean the spring pin and retention part, apply a drop on dry and degreased threads, and tighten the spring pin gradually fully down.

Remove possible excesses and let the material dry for 3 hours, it will not harden. **NOBIL GRIP** is not a permanent fixation, with the lab key the spring pin may still be easily unscrewed.

■ AC-000-0 5 ml

Store at room temperature



EXTRACORONAL

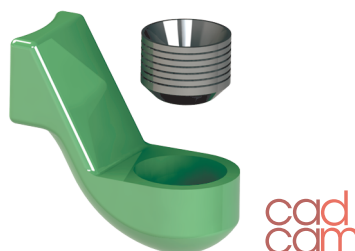
LV SP3

Extracoronel M3 Spring Pin System
M3 | H: 3.15 mm | Ø Head: 1.88 mm

*Improved for better casting results
Strong long-lasting retention source*



■ Cast-on Technique NP



■ Cementing Technique NOBIL FIX



■ Cast-on Technique PM



Cementing Technique
NOBIL FIX



Acrylic longitudinal
retention



Soldering Technique



Acrylic circular retention

- S3-101-22
- S3-101-26
- S3-101-25

⚠ Order numbers of complete Attachments LV SP3

- S3-101-32
- S3-101-36
- S3-101-35

- S3-101-72
- S3-101-76
- S3-101-75

- S3-101-42
- S3-101-46
- S3-101-45

Each attachment is composed of 2 burn-out patterns (45°, 60°), the female and a complete male.

H: 4.50 mm | Ø: 4 mm

Bolt-on Technique

- S3-101-56

LV SP3 spring pin attachment for the NP cast-on technique, with a 60° burn-out pattern.

The TI Alloy retention nut secures the spring pin mechanically.



- S3-111-ST 2 pcs
LV SP3 retention nut TI Alloy



- S3-111-1 10 pcs
LV SP3 burn-out plastic ring



- S3-111-5 2 pcs
LV SP3 Spring pin for bolt-on techn. AP Alloy
H: 4,36 mm / Ø 4 mm
Head Ø 1,88 mm / Rim: 0,4 mm

EXTRACORONAL

LV SFE

Extracoronar Spherical Attachment

Polyacetal females, made with three segments for better retention

Improved pattern design for easier production

ø Male: 2.25 mm - Combined accessories

Can also be used on implant bars

cad
cam



■ Burn-out Plastic to be assembled

■ Cementing Technique NOBIL FIX



Duplicating Technique



Titanium Housing



Duplicating Technique



Titanium Housing

⚠ Order numbers of complete Attachments LV SFE

■ SF-104-19



■ SF-104-14



■ SF-104-29



■ SF-104-24



Each attachment is composed of 3 plastic patterns (0°, 45°, 60°), the male and a complete female (with optional duplicating accessory)

H: 5.10 mm | ø: 3.40 mm

NOBIL FIX

NOBIL FIX is an anaerobic bonding and filling composite, that guarantees a perfect couple through cementation of metal parts in dental restorations. Bring **NOBIL FIX** at room temperature 2 hours before using it.

Drive out a small quantity of **NOBIL FIX** on a mixing pad. Apply the material only on thoroughly sandblasted, steamed and dry surfaces. Assemble parts into position, let harden for 10 minutes, remove all excesses and polish.

Excellent bonding to precious and non-precious alloys.
Working time of 90 Sec Setting time 10 Min

■ AC-000-02 5 ml | 10 nozzles

Store at 3°C - 9°C



EXTRACORONAL

LV VER

Extracoronaral ø 1.80 mm Slide Attachment in 2 lengths

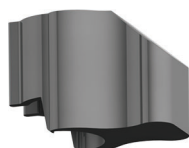
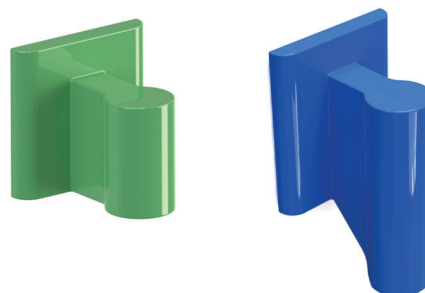
2 heights: *MINI: 3 mm (90°) to be used in the anterior region*
STANDARD: 5 mm (45°) may be reduced to a minimum of 3 mm

Rounded surfaces to facilitate finishing and scanning

Polypropylene elastic females with 2 dorsal retention grooves

Available with 3 retention levels

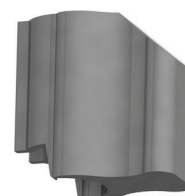
cad
cam



Co-Cr Sintered housing for Cementing,
Cast-on or Soldering Technique



Burn-out Plastic Housing



Co-Cr Sintered housing for Cementing,
Cast-on or Soldering Technique

LV VER MINI Kit

VR-103-18

6 males 3 mm

6 yellow females 3 mm

1 universal insertion tool

⚠ Order numbers of complete Attachments LV VER

LV VER STANDARD Kit

VR-102-18

6 males 5 mm

6 yellow females 5 mm

1 universal insertion tool

NM BONDING

Using **NM Bonding** as a wash paste opaque, on prepared Ti free non-precious alloys, allows a direct application of porcelain on all sintered Attachments LV **Housings** in **CR Alloy - Keramit NP**.

Thus with **NM Bonding** one gains the vital space to obtain a perfect aesthetical restauration. No risk of graying/greening of the ceramic in thin areas, but an improved metal-ceramic adhesion is reached.

NM Bonding is available in paste in 6 g jar.

Ref.: NM BONDING

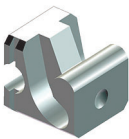
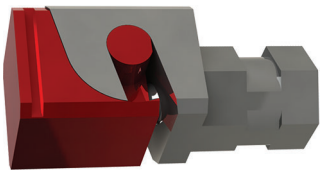


EXTRACORONAL RESILIENT

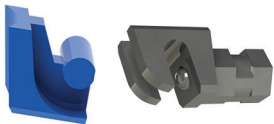
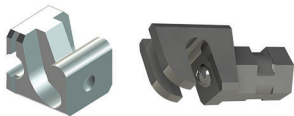
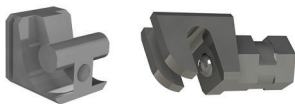
LV CER


Unilateral attachment with hinge movement
Applicable in all 4 quadrants

Strong and stable, straight or inclined with ball retention activated by a long-lasting spring




 Order numbers of complete Attachments LV CER



 CR-706-77


IN / IN for soldering
H: 3.50 mm
W: 3.50 mm
L: 8.50 mm

 CR-706-17

90° burn-out plastic
IN for soldering
H: 3.50 mm
W: 3.50 mm
L: 8.50 mm

 CR-706-57

HT for cast-on technique PM
IN for soldering
H: 3.50 mm
W: 3.50 mm
L: 8.50 mm

 CR-706-17-I

110° inclined burn-out plastic
IN for soldering
H: 3.50 mm
W: 3.50 mm
L: 8.50 mm

SAGITTAL

LV SAG

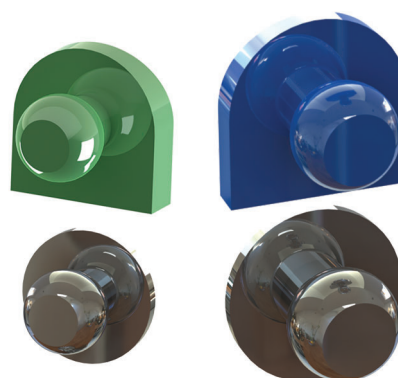
Sagittal spherical male and segmented females
3 degrees of retention

Burn-out plastic and direct casting (NP) males - polyacetal snapping females

*System with 2 dimensions: **MINI** ø 1.70 mm - **STANDARD** ø 2.25 mm*

Cr-Co housing: can be cemented, fixed in acrylic, soldered or cast

Ceramic can be fired on it



cad
cam



Co-Cr MINI Sintered housing for
Cementing, Cast-on or Soldering Technique



Co-Cr STANDARD Sintered housing for
Cementing, Cast-on or Soldering Technique

⚠ Order numbers of complete Attachments LV SAG

LV SAG MINI Kit

SG-305-19

2 males ø 1.7mm in burn-out plastic
2 yellow females
2 duplicating accessories

LV SAG MINI Kit

SG-305-69

2 males ø 1.7mm for cast-on Technique NP
2 yellow females
2 duplicating accessories

LV SAG STANDARD Kit

SG-304-19

2 males ø 2.25mm in burn-out plastic
2 yellow females
2 duplicating accessories

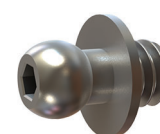
LV SAG STANDARD Kit

SG-304-69

2 males ø 2.25mm for cast-on Technique NP
2 yellow females
2 duplicating accessories

Combining the LV SAG male **SG-314-0** in CAD-CAM and traditional implantology as a lateral retainer in the vertical wall of a bar, allows to improve the vertical dimensions of the restoration. **SG-314-0** has a M2 thread of 1.60 mm length, a supporting disc of ø 3.60 mm and 0.30 mm thick, plus an internal hex of 0.90 mm.

NOBIL GRIP will secure **SG-314-0** into its position.



SG-314-0

ø 2,2 mm male in Ti for CAD/CAM
M2 thread.
0,9 mm internal hex.
Use the AC-474-I screwdriver

TELESCOPIC FRICTION

LV KON

Telescopic Friction Retention Provider

The soft friction arch retention in PB, in 6 degrees, can be applied to a 0° -2° inclined or milled surface of a crown, a bar or a prepared surface of teeth

May be shortened till 4 mm

Direct modelling and duplicating accessories available

Used in removable bridges on implants, as an alternative for a screw retained bridge.

Less restrictions in case of anatomical difficulties









Assures a perfect fit and high stability

Improved phonetics and aesthetics



cad
cam

* PATENTED PRODUCT

					
Reduced	Weak	Normal	Medium	Strong	Extra-strong
<input type="checkbox"/> KN-812-0 6 pcs <input type="checkbox"/> KN-812-0Z 25 pcs	<input type="checkbox"/> KN-812-1 6 pcs <input type="checkbox"/> KN-812-1Z 25 pcs	<input type="checkbox"/> KN-812-2 6 pcs <input type="checkbox"/> KN-812-2Z 25 pcs	<input type="checkbox"/> KN-812-3 6 pcs <input type="checkbox"/> KN-812-3Z 25 pcs	<input type="checkbox"/> KN-812-4 6 pcs <input type="checkbox"/> KN-812-4Z 25 pcs	<input type="checkbox"/> KN-812-5 6 pcs <input type="checkbox"/> KN-812-5Z 25 pcs
H: 10 mm W: 3 mm T: 1 mm	H: 10 mm W: 3.02 mm T: 1.09 mm	H: 10 mm W: 3.02 mm T: 1.09 mm	H: 10 mm W: 3.02 mm T: 1.09 mm	H: 10 mm W: 3.04 mm T: 1.15 mm	H: 10 mm W: 3.04 mm T: 1.15 mm
 <p>Direct modelling method auxiliary</p> <input type="checkbox"/> KN-852-W 6 pcs			 <p>Duplicating technique auxiliary</p> <input type="checkbox"/> KN-852-O 6 pcs		
<p>Kit for direct modelling</p> <input type="checkbox"/> KN-802-W <div> <div>5</div> <div>5</div> <div>3</div> <div>3</div> <div>2</div> <div>2</div> </div> <div>5 W</div>			<p>Kit for silicone duplicating</p> <input type="checkbox"/> KN-802-O <div> <div>5</div> <div>5</div> <div>3</div> <div>3</div> <div>2</div> <div>2</div> </div> <div>5 O</div>		
H: 10 mm W: 3 mm T: 1 mm			H: 10 mm W: 3 mm T: 1 mm		



TELESCOPIC FRICTION

LV KON *plus*

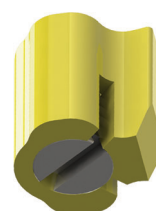
**cad
cam**

Adjustable Telescopic Friction Retention Provider
Unique reduced dimensions: H: 2.8 mm - L: 2.8 mm - B: 2.8 mm

By tightening the TI screw and the hexagonal TI nut combination the polyactetal structure is expanded to obtain a higher friction level. This adjustable friction retention is due to it reduced dimensions easy to use in combination with NP Telescopic crowns and bars. The contact surface may have a 0° - 2° inclination.

Duplicating accessory can also be used as direct modelling tool.

Used in removable bridges with little vertical height on implants, as an alternative for a screw retained bridge.



INTRO KIT

☐ KP-802-KI

6 adjustable friction parts
6 duplicating accessories
1 removal instrument
1 activator / double insertion tool

☐ KP-802-02

2 adjustable friction parts
2 duplicating accessories

☐ KP-802-06

6 adjustable friction parts
6 duplicating accessories

ACCESSORIES



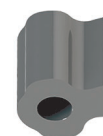
AC-870-R 1 pc



AC-870-AI 1 pc

LV KON plus
Remover

LV KON plus
Double insertion tool



<input type="checkbox"/> KP-812-06	6 pcs	<input type="checkbox"/> KP-812-12	12 pcs	<input type="checkbox"/> KP-812-25	25 pcs	<input type="checkbox"/> KP-852-06	6 pcs	<input type="checkbox"/> KP-852-12	12 pcs	<input type="checkbox"/> KP-852-25	25 pcs
------------------------------------	-------	------------------------------------	--------	------------------------------------	--------	------------------------------------	-------	------------------------------------	--------	------------------------------------	--------

Adjustable friction parts	Adjustable friction parts	Adjustable friction parts	Duplicating accessories	Duplicating accessories	Duplicating accessories
---------------------------	---------------------------	---------------------------	-------------------------	-------------------------	-------------------------

LV KON plus can be used with traditional ANALOGUE techniques as with the DIGITAL techniques, download the STL Files from www.nobilmetal.com



AXIAL

LV SP2

Axial M2 Spring Pin Attachment System
M2 | H: 2.70 mm | ø Head: 1.88 mm

*Inverted and traditional designs. Cast-on technique for PM and NP
Can also be used on bars on implants - Double use accessories*



Acrylic circular retention



Cementing Technique
NOBIL FIX



Cast-on Technique NP



Soldering or cast-on
Technique PM

cad
com

⚠ Order numbers of complete Attachments LV SP2

■ SP-401-42

H: 3.80 mm
ø: 3.40 mm

■ SP-401-22

H: 3.80 mm
ø: 3.40 mm

■ SP-401-64

H: 3.60 mm
ø: 3.40 mm

■ SP-401-54

H: 3.60 mm
ø: 3.40 mm

NOBIL FIX

NOBIL FIX is an anaerobic bonding and filling composite, that guarantees a perfect couple through cementation of metal parts in dental restorations. Bring **NOBIL FIX** at room temperature 2 hours before using it.

Expel a small quantity of **NOBIL FIX** on a mixing pad. Apply the material only on thoroughly sandblasted, steamed and dry surfaces. Assemble parts into position, let harden for 10 minutes, remove all excesses and polish.

Excellent bonding to precious and non-precious alloys.
Working time of 90 Sec Setting time 10 Min

■ AC-000-02 5 ml | 10 nozzles

Store at 3°C - 9°C

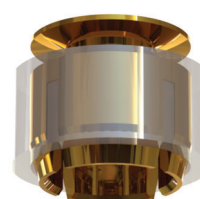


AXIAL

LV PAL

Axial Ball Attachment

Male for soldering, in burn-out plastic, cast-on technique for PM, NP
 ø Male: 2.25 mm - Female in OR or TI
 0.9 mm Internal Hex - M2 Thread - NOBIL GRIP recommended
 Compatible with several Implant Systems



Soldering Technique

Burn-out plastic

Cast-on Technique PM

Base ring for cast-on Technique PM

PL-404-74



Female OR
 H: 3.55 mm
 ø: 3.50 mm

PL-404-14



Female TI
 H: 3.55 mm
 ø: 3.50 mm

PL-404-54



Female OR
 H: 3.55 mm
 ø: 3.50 mm

PL-404-05



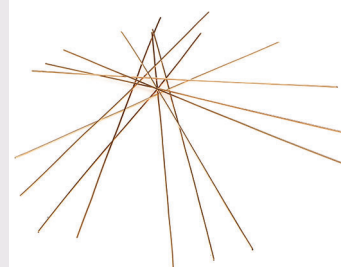
Female OR
 H: 4.35 mm
 ø: 3.50 mm

⚠ Order numbers of complete Attachments LV PAL

SOLDER CROCHET

Solder these precious alloys parts easily with **Solder Crochet**. This solder and several other Nobil Metal solders are special because of the incorporated and alloys adapted flux. **Solder Crochet** has also its equivalent in white colour, AUCROM 1 and further developed solders used since several decades for precious, semi-precious and non-precious dental alloys.

Consult www.nobilmetal.com for the alloys and solders chart



AXIAL

LV SFE

Axial Spherical Attachment

Male in burn-out plastic and for cast-on technique PM, with removable Titanium male

ø Male: 2.25 mm - 0.9 mm Internal Hex - M2 Thread

NOBIL GRIP recommended

Compatible with several Implant Systems

Polyacetal females, made with three segments for better retention

cad
cam



Burn-out plastic

Burn-out plastic

Soldering and cast-on Technique PM

Base ring for cast-on Technique PM

SF-404-19



Duplicating accessory

H: 3.40 mm

ø: 3.55 mm

SF-404-14



Ti Housing

H: 3.40 mm

ø: 4.00 mm

SF-404-54



Ti Housing

H: 3.40 mm

ø: 4.00 mm

SF-404-05



Ti Housing

H: 4.10 mm

ø: 4.00 mm

⚠ Order numbers of complete Attachments LV SFE

Combine on top of an implant supported bar the **SF-414-0** with the polyacetal females of the LV SFE Attachments or the OR females of the LV PAL Attachments.

Both will give a functional retention, combined with a rotation possibility. **SF-414-0** has a total height of 3.76 mm, a M2 thread of 1.60 mm length, a supporting disc of Ø 3.60 mm and 0.30 mm thick, plus an internal hex of 0.90 mm.

Use **NOBIL GRIP** to prevent **SF-414-0** spontaneous unscrewing.



SF-414-0

Ø 2.25 mm male in Ti for CAD/CAM

M2 thread

0.9 mm internal hex

Use the AC-474-I screwdriver

AXIAL / RADICULAR / EXTRACORONAL, BAR & CAD CAM

LV SFE 50%

Using the principle of a spherical attachment with a diameter of 2.25 mm a new retainer design has been developed, tried out and approved, those years.

As "vertical space" has always been a restriction in the use of adjustable retention providers, Nobil Metal has engineered a blueprint for the next decades of prosthetic restorations.



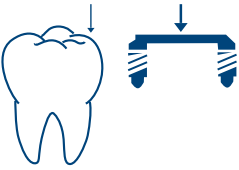


In every indication, from Axial over Extracoronar, to Radicular and Bar concepts, analogical and digital, the LV SFE 50% will be a non-declinable option in the concept of new outlines for the removable rehabilitations of our future patients.

To reduce dimensions and maintain, even improve, functions wasn't easy, therefore this revolutionary concept has been developed and tested under the hardest conditions (Patented Product).

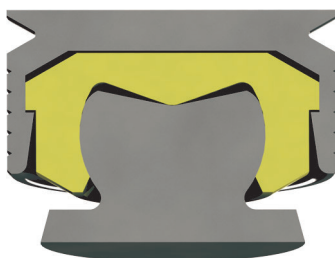
The result: a total diameter never exceeding 4 mm and a vertical minimum space inferior to 2.40 mm, maintaining the adjustable retention of 600 gr, 800 gr or 1.000 gr, while having a rotational potential of twice +/-10% and keeping a soft and stable axial support.

The principle:

Male design with a 2.25 mm diameter, reduced in its height to 1.45 mm, with a depression in its centre to support the vertical load of the rehabilitation.

				
AXIAL	RADICULAR	EXTRACORONAL & BARS	CAD / CAM	IMPLANT ABUTMENT
HT Alloy for PM cast-on technique or soldering Ø 3.20 mm H: 1.45 mm	TI Alloy male with post Ø Base : 3.40 mm Ø Post: 1.35 mm H post: 6.50 mm	3 burn-out male keepers 0°, 45° & 60° with Cementable TI Alloy male	1 threaded M2 male in TI Alloy, with a supporting platform	TI Alloy, for the most used implant brands in heights of: 2 mm / 3 mm / 4 mm / 5 mm / 6 mm <i>Separate leaflet in preparation</i>

3 Females, white: reduced retention, yellow: standard retention and red: increased retention to be inserted in a TI Alloy housing or, in a through a duplicating accessory obtained, cavity in the restauration.



LV SFE 50%: the name shows the volume of the male is about 50% less than a normal 2.25 mm male used till today (LV SFE and similar).

AXIAL / RADICULAR

LV SFE 50%

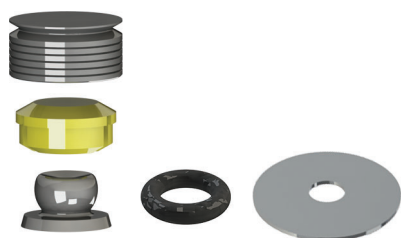
The male and female designed to obtain a gain of 50% space, vertically and laterally, with 3 retention levels of the polyacetal female.

All existing LV SFE accessories can be used

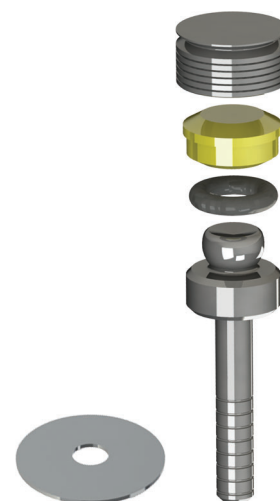


* PATENTED PRODUCT

AXIAL



RADICULAR



⚠ Order numbers of complete Attachments LV SFE 50%

Soldering and PM cast-on technique

■ 50-404-54

TI Alloy Housing

H: 2.85 mm | Ø: 4.00 mm



Spherical provisional attachment for clinicians

■ 50-504-24

TI Alloy Housing

TI SFE 50% male with cementable post

Ø Base: 3.40 mm | Ø Post: 1.35 mm | H Post: 6.50 mm

NOBIL GRIP

The use of **NOBIL GRIP**, an anaerobic adhesive, on the threads of the male parts Ref.: 50-114-0, will avoid a possible spontaneous gradual loosening. **NOBIL GRIP** is mouth-resistant, non-toxic, and does not dissolve.

Remove possible excesses and let the material dry for 3 hours, it will not harden. **NOBIL GRIP** is not a permanent fixation, with the lab key it may still be easily unscrewed.

■ AC-000-0

5 ml

Store at room temperature



EXTRACORONAL, BAR & CAD CAM

LV SFE 50%

TI Alloy male to be cemented or threaded into position providing retention and tolerances. Together with the female designed to obtain a gain 50% of space, vertically and laterally, with 3 retention levels of the polyacetal female.

All existing LV SFE accessories can be used



* PATENTED PRODUCT

EXTRACORONAL & BARS



Cementing Technique NOBIL FIX

cad
cam



NOBIL GRIP Recommended

⚠ Order numbers of complete Attachments LV SFE 50%



Duplicating Technique

■ 50-104-29



Titanium Housing



■ 50-104-24

Each attachment is composed of 3 plastic patterns (0°, 45°, 60°), the male and a complete female (with optional duplicating accessory)



STL files for: exocad, 3Shape and dental wings available on www.nobilmetal.com

■ 50-414-CI

H: 3.76 mm
M2 thread * 1.60 mm length
Supporting disc Ø 3.60 mm
External groove for screwdriver AC-475-I

LV SFE 50%

The goal of the R & D department of Nobil Metal was to generate a remarkable gain of space, through a new and special design of the SFE 50% males, while maintaining movement upon to 2 x 20° and providing 3 retention levels.

LV SFE 50% Abutments are available for the most used implant systems in different heights, to be secured with conventional torque.

The SFE 50% abutments are delivered in a non-sterile packaging, with a yellow female (normal retention), a TI Alloy housing and a rubber space maintainer.

Ask your distributor, or see on www.nobilmetal.com, for the separate SFE 50% Abutments catalogue, with clinical and technical instructions



RADICULAR

LV SFE

Spherical Radicular provisional Attachment for Clinicians

Titanium alloy standardized post with spherical (removable) male ø 2.25 mm
 Polyacetal females with 3 retention degrees and TI housing or duplicating accessory
 0.9 mm Internal Hex - M2 Thread - NOBIL GRIP Recommended
 Polyacetal females, made with three segments for better retention
 Compatible with several Implant Systems



⚠ Order numbers of complete Attachments LV SFE

<div>SF-504-24</div> <div>Ti Housing</div> <div>Ø Post: 1.35 mm</div> <div>Height post: 7 mm</div>	<div>SF-504-29</div> <div>Duplicating accessory</div> <div>Ø Base: 3.40 mm</div>	<div>SF-504-04</div> <div>Ti Housing</div> <div>Ø Female: 3.55 mm</div>	<div>SF-504-09</div> <div>Duplicating accessory</div> <div>Ø Housing: 4.00 mm</div>
--	--	---	---

NOBIL GRIP

The use of **NOBIL GRIP**, an anaerobic adhesive, on the threads of the male parts, will avoid a possible spontaneous gradual loosening. **NOBIL GRIP** is non-toxic and does not dissolve. Clean the spring pin and retention part, apply a drop on dry threads and tighten the male down.

Remove possible excesses and let the material dry for 3 hours, it will not harden. **NOBIL GRIP** is not a permanent fixation, with the lab key it may still be easily unscrewed.

AC-000-0 5 ml

Store at room temperature



BAR

LV HOR

Burn-out plastic bar profile \varnothing 1.80 mm - 4 mm high
H. Hader design
MINI Riders : length 3 mm
STANDARD Riders: length 5 mm

Rigid housing, bar structure indicated for simple implant restorations



cad
cam

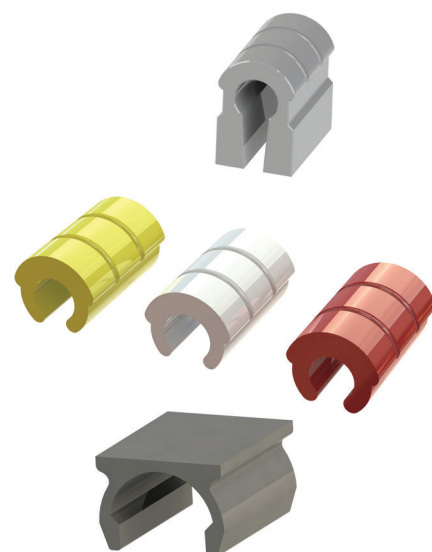


LV HOR MINI Kit

■ HR-603-19

2 bars
6 yellow MINI riders 3 mm
6 MINI processing riders 3 mm
1 universal insertion tool

⚠ Order numbers of complete Attachments LV HOR



LV HOR STANDARD Kit

■ HR-602-19

2 bars
6 yellow STANDARD riders 5 mm
6 STANDARD processing riders 5 mm
1 universal insertion tool

KERAMIT NP

The use of **Keramit NP** as a Cobalt-Chrome dental alloy for ceramic is recommended in case of need of a non-precious alloy. The easy melting and its good fluidity are convincing, but low hardness, when it comes to milled areas, is the persuasive argument for the dental technician. The composition of **Keramit NP**: free of Nickel, Gallium and Beryllium convinces the dental surgeon to approve the selection, as an outstanding cytocompatibility and resistance to corrosion will be extremely well tolerated by most patients.

Keramit NP has obtained excellent results in combination with **NM Bonding** and all wellknown ceramics with traditional CTE values.

Consult www.nobilmetal.com for more information on **Keramit NP**



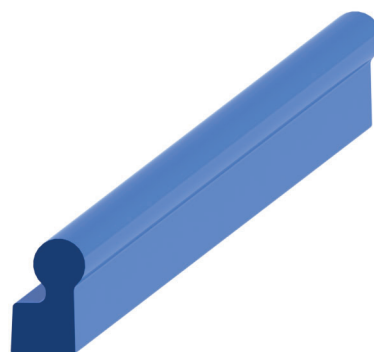
BAR

LV OCAD

OCAD® bar profile for optimal stability and indirect retention to prevent extended saddles to lift off.

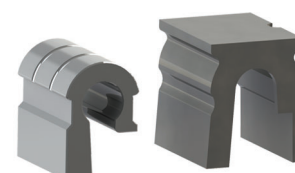
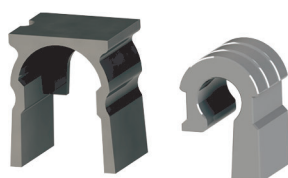
The special OCAD housing provides a perfect seat of the LV HOR riders and indirect retention when combined with the OCAD bar profile.

Riders available in 3mm and 5mm lengths



cad
cam

* PATENTED PRODUCT



⚠ Order numbers of complete Attachments LV OCAD

LV OCAD MINI Kit

■ OC-603-19

2 bars
6 yellow MINI riders 3 mm
6 MINI processing riders 3 mm
2 MINI housings 3 mm
1 universal insertion tool

LV OCAD STANDARD Kit

■ OC-602-19

2 bars
6 yellow STANDARD riders 5 mm
6 STANDARD processing riders 5 mm
2 STANDARD housings 5 mm
1 universal insertion tool

LV OCAD MINI Kit CC

■ OC-603-19CC

6 yellow MINI riders 3 mm
6 MINI processing riders 3 mm
6 MINI housings 3 mm
1 universal insertion tool

LV OCAD STANDARD Kit CC

■ OC-602-19CC

6 yellow STANDARD riders 5 mm
6 STANDARD processing riders 5 mm
6 STANDARD housings 5 mm
1 universal insertion tool

LV OCAD STARTER SET CI MINI

■ OC-603-CI

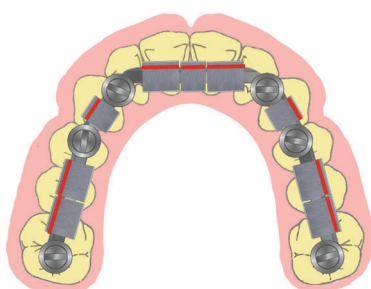
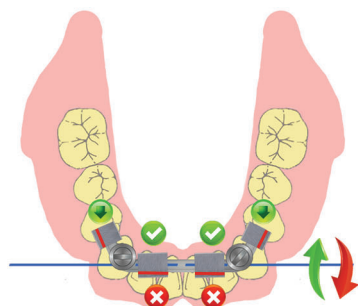
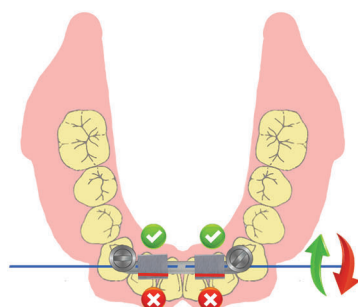
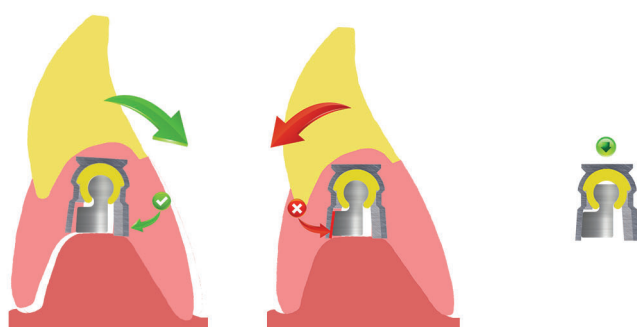
2 yellow MINI riders 3 mm
2 white MINI riders 3 mm
2 MINI processing riders 3 mm
2 MINI housings 3 mm
1 universal insertion tool

LV OCAD STARTER SET CI STANDARD

■ OC-602-CI

2 yellow STANDARD riders 5 mm
2 white STANDARD riders 5 mm
2 STANDARD processing riders 5 mm
2 STANDARD housings 5 mm
1 universal insertion tool

BAR



The **LV OCAD** is a bar attachment system providing indirect retention to prevent extended saddles to lift off the mucosa, resulting in a very high degree of comfort to the patient.

When the **OCAD** bar is assembled with the **OCAD** housing, rotational movement around the axis of the round profile of the bar is only possible in the direction of compressed tissue.

Lift-off forces of the extended saddles are prevented by a contact surface between the **OCAD** housing and the bar.

The contact surfaces between the **OCAD** housing and the **OCAD** bar (4°) guarantee ease of insertion, lateral stability and occlusal comfort.

For extra retention and stability, **OCAD** attachments can also be placed on an extended bar and do not interfere with the resilience of the prosthesis by reducing the round profile of the bar by 0,3 mm.

OCAD space maintainers are provided for simple processing.

The **OCAD** housing has a notch on the occlusal surface to indicate the labial side.

The **OCAD** processing clip is oriented with the short leg towards the notch.



The female riders are available in three retention forces and are easily exchanged.

OCAD housings and female riders are available in 5 mm and 3 mm lengths.

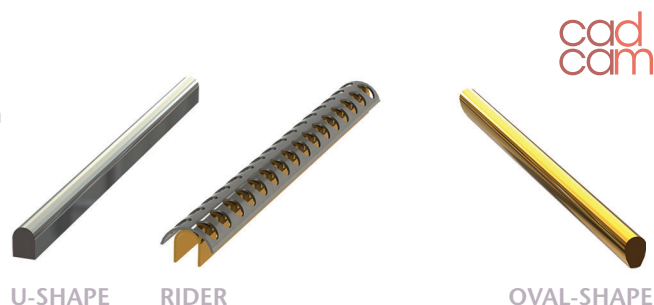
BAR

LV BAR

Metal rider in 4 alloy combinations and two sizes, typically used on implant structures: OR/OR - OR/AP - AP/AP - IN /IN.

Patented PALOR® riders OR/AP for a stronger , more rigid, golden retention part.

*The laser welded metal riders can be shortened till 6 mm
Metal bar in Standard size, two alloys, two shapes and two lengths.*



SINGLE PARTS STANDARD RIDER



BR-682-3OR
Rider + Space maintainer
H: 3.5 mm | W: 5 mm | L: 50 mm



BR-682-3OR-AP
PALOR Rider + Space maintainer
H: 3.5 mm | W: 5 mm | L: 50 mm



BR-682-3AP
Rider + Space maintainer
H: 3.5 mm | W: 5 mm | L: 50 mm

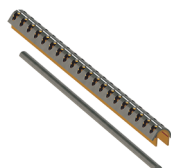


BR-682-3IN
Rider + Space maintainer
H: 3.5 mm | W: 5 mm | L: 50 mm

MINI RIDER



BR-683-3OR
Rider + Space maintainer
H: 2.8 mm | W: 4 mm | L: 50 mm



BR-683-3OR-AP
PALOR Rider + Space maintainer
H: 2.8 mm | W: 4 mm | L: 50 mm

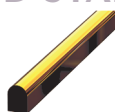


BR-683-3AP
Rider + Space maintainer
H: 2.8 mm | W: 4 mm | L: 50 mm

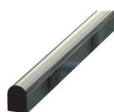


BR-683-3IN
Rider + Space maintainer
H: 2.8 mm | W: 4 mm | L: 50 mm

RIGID STANDARD BAR



BR-612-7AU
U-Shape 50 mm
H: 3 mm | W: 2.2 mm



BR-612-7PL
U-Shape 200 mm
H: 3 mm | W: 2.2 mm

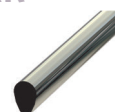
BR-612-7AU-L
U-Shape 200 mm
H: 3 mm | W: 2.2 mm

BR-612-7PL-L
U-Shape 200 mm
H: 3 mm | W: 2.2 mm

DYNAMIC STANDARD BAR



BR-614-7AU
Oval-Shape 50 mm
H: 3 mm / W: 2.2 mm



BR-614-7PL
Oval-Shape 50 mm
H: 3 mm / W: 2.2 mm

BR-614-7AU-L
Oval-Shape 200 mm
H: 3 mm / W: 2.2 mm

BR-614-7PL-L
Oval-Shape 200 mm
H: 3 mm / W: 2.2 mm

BAR

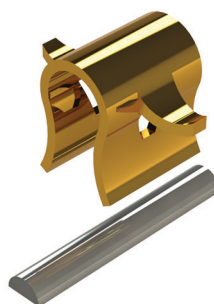
LV CLI

1.80 mm Round bar for elastic metal riders
Lateral or occlusal bendable retention

Riders in OR and IN alloy

Do not solder the females

Bar in AU alloy for soldering, or in burn-out plastic



SINGLE PARTS



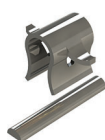
CL-694-4OR 2+2 pcs

CL-694-4OR-Z20+20 pcs

H: 3.65 mm

L: 3.50 mm

Each rider has a 0.7 mm high space maintainer



CL-694-4IN 2+2 pcs

CL-694-4IN-Z20+20 pcs

H: 3.65 mm

L: 3.50 mm

Each rider has a 0.7 mm high space maintainer



CL-694-3OR 2+2 pcs

CL-694-3OR-Z 20+20 pcs

H: 3.65 mm

L: 3.50 mm

Each rider has a 0.7 mm high space maintainer



CL-694-3IN 2+2 pcs

CL-694-3IN-Z 20+20 pcs

H: 3.65 mm

L: 3.50 mm

Each rider has a 0.7 mm high space maintainer



CL-614-7AU 1 pcs

Round bar
Ø: 1.80 mm
L: 50 mm
AU Alloy



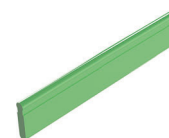
CL-614-1 6 pcs

Round bar
Ø: 1.80 mm
L: 50 mm



CL-613-1 6 pcs

Oval bar
H: 2.3 mm
Ø: 1.80 mm
L: 50 mm



CL-612-1W 6 pcs

CL-612-1W-Z 25 pcs

Round bar with vertical extension
Ø: 1.80 mm
L: 50 mm
H: 10 mm

CONNECTORS

LV JV

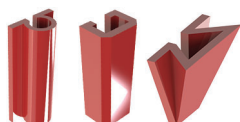
Connectors for indirect splinting of fixed bridgework, implant structures and removables

3 unique shapes

Use Nobil Metal PVF investment for best results



JV 1	JV 2	JV 3
JV-200-11-O 6 pcs	JV-200-11-U 6 pcs	JV-200-11-V 6 pcs
Round	Square	Conical
H: 6.60 mm	H: 6.00 mm	H: 3.50 mm
Ø: 1.30 mm	W: 1.50 mm	C: 20°



LV JV Combi

JV-200-11-ZX 2+2+2 pcs

ACCESSORIES



AC-070-DB 1 pc

LV FIX drilling bur
10.000 Rpm



AC-070-CB 1 pc

LV FIX centralising bur
5.000 Rpm



AC-474-I 1 pc

LV FIX 0.90 mm hex
driver with finger
protection cover

LV FIX

cad
cam

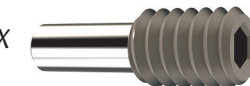
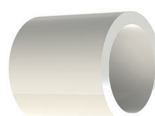
System to fix bridges and connect structures to implants

Small space requirements - 2 lengths

3 components - simple but accurate procedure

Cementing procedure with NOBIL FIX

Prevent unthreading by using NOBIL GRIP adhesive



Order numbers of complete Attachments LV FIX



LV FIX MINI Kit

FX-068

1 TI MINI Screw / L: 4 mm
1 TI MINI Threaded ring
L: 2 mm
1 MINI Plastic Spacer guide
L: 2 mm

FX-068-Z

4 TI MINI Screw / L: 4 mm
4 TI MINI Threaded ring
L: 2 mm
4 MINI Plastic Spacer guide
L: 2 mm

LV FIX STANDARD Kit

FX-068-L

1 TI STANDARD Screw
L: 6 mm
1 TI STANDARD Threaded ring
L: 3 mm
1 STANDARD Plastic Spacer guide
L: 3 mm

FX-068-LZ

4 TI STANDARD Screw / L: 6 mm
4 TI STANDARD Threaded ring
L: 3 mm
4 STANDARD Plastic Spacer guide
L: 3 mm

LV FIX MINI



FX-060 1 pc

LV FIX MINI screw - TI Alloy
Use NOBIL GRIP to avoid
spontaneous gradual loosening
L: 4 mm | ø 1.20 mm
Int. hex: 0.90 mm | M1.8



FX-048-2 1 pc

LV FIX MINI threaded ring -
TI Alloy
Use NOBIL FIX to cement
L: 2 mm | Ext. ø 3.10 mm
Int. ø 2.40 mm | M1.8 x 0.35



FX-040-1 6 pcs

LV FIX MINI spacer guide
burn-out plastic
L: 2 mm
ø 2.40 mm

LV FIX STANDARD



FX-060-L 1 pc

LV FIX STANDARD screw - TI Alloy
Use NOBIL GRIP to avoid
spontaneous gradual loosening
L: 6 mm | ø 1.20 mm
Int. hex: 0.90 mm | M1.8



FX-048-2L 1 pc

LV FIX STANDARD threaded ring
TI Alloy
Use NOBIL FIX to cement
L: 3 mm | Ext. ø 3.10 mm
Int. ø 2.40 mm | M1.8 x 0.35



FX-040-1L 6 pcs

LV FIX STANDARD spacer guide
burn-out plastic
L: 3 mm
ø 2.40 mm

CAD / CAM

Nobil Metal has made special Attachments LV kits for the use in CAD CAM structures, as some parts are produced through the milling or printing techniques. Those kits do only contain the necessary parts for the achievement of the constructions. **Download your STL-Files Free from <http://lvattachments.nobilmetal.com>**

**cad
cam**

LV SP2 <input checked="" type="checkbox"/> SP-101-CI	1 retention part for bonding + duplication dummy 1 M2 spring pin AP alloy 1 space maintainer 1 female TI alloy for bonding	
LV SP3 <input checked="" type="checkbox"/> S3-101-CI	1 retention part for bonding + dupl. dummy 1 M3 spring pin AP alloy 1 space maintainer 1 female TI alloy for bonding	
LV SFE <input checked="" type="checkbox"/> SF-104-CI	1 housing TI alloy 1 duplicating dummy 1 yellow female POM 1 male TI alloy 1 rubber space maintainer	
LV SFE50% <input type="checkbox"/> 50-104-CI	1 housing TI alloy 1 duplicating accessory 1 yellow female POM 1 male TI 1 rubber space maintainer	
LV VER <input checked="" type="checkbox"/> VR-132-CI	2 yellow females 5 mm 2 white females 5 mm 1 universal insertion tool for females	
LV SAG <input type="checkbox"/> SG-314-CI	1 male Ø 2.2 mm TI alloy M2 thread 1 yellow female POM 1 white female POM 1 duplicating dummy	
LV SFE <input type="checkbox"/> SF-414-CI	1 male Ø 2.25 mm TI alloy M2 thread 1 yellow female POM 1 white female POM 1 duplicating dummy 1 housing TI alloy 1 rubber + 1 large space maintainer	
LV SFE50% <input type="checkbox"/> 50-414-CI	1 male M2 in TI alloy 1 duplicating accessory 1 yellow female POM 1 white female POM 1 male TI 1 rubber space maintainer	
LV HOR mini <input checked="" type="checkbox"/> HR-603-CI	2 yellow females 3 mm PP 2 white females 3 mm PP 2 processing riders 3 mm 2 housings 3 mm CR alloy 1 universal insertion tool	
LV HOR standard <input checked="" type="checkbox"/> HR-602-CI	2 yellow females 5 mm PP 2 white females 5 mm PP 2 processing riders 5 mm 2 housings 5 mm CR alloy 1 universal insertion tool	
LV OCAD mini <input checked="" type="checkbox"/> OC-603-CI	2 yellow females 3 mm PP 2 white females 3 mm PP 2 processing riders 3 mm 2 housings 3 mm CR alloy 1 universal insertion tool	
LV OCAD standard <input checked="" type="checkbox"/> OC-602-CI	2 yellow females 5 mm PP 2 white females 5 mm PP 2 processing riders 5 mm 2 housings 5 mm CR alloy 1 universal insertion tool	

EXTRACORONAL & AXIAL - LV SP2

INDIVIDUAL PARTS LVSP2



■ SP-111-0 2 pcs + 2 SM

Spring pin SP2 - AP Alloy
H: 2.70 mm / Ø 2 mm
Ø Head 1.88 mm
Use NOBIL GRIP to avoid spontaneous unthreading



■ SP-111-W 2 pcs

Repair spring pin SP2 - AP Alloy
Ø Head: 1.95 mm
Use NOBIL GRIP



■ SP-111-L 2 pcs

Repair spring pin SP2 - AP Alloy
H: 3.00 mm
Use NOBIL GRIP



■ SP-171-Q 10 pcs

Space Maintainer - IN Alloy
0.30 mm thickness



■ SP-111-2 2 + 2 pcs

LV SP2 retention part for bonding with NOBIL FIX - TI Alloy
Grey duplicating dummy with incorporated Space Maintainer



■ SP-111-3 2 pcs

LV SP2 winged retention part for acrylic fixation - TI Alloy



■ SP-411-5 2 pcs

LV SP2 retention part / base ring for soldering with Solder Crochet, or for cast-on technique with precious alloys - HT Alloy
3 retention grooves



■ SP-411-6 2 pcs

LV SP2 retention part / base ring for soldering with Solder Crochet, or for cast-on technique with non-precious alloys - NP Alloy
6 retention grooves



■ SP-111-4 2 pcs

LV SP2 circular retention part for acrylic fixation - TI Alloy



■ SP-431-4 1 pc

Axial LV SP2 female for acrylic fixation - TI Alloy



■ SP-471-QL 1 pc

Large Space Maintainer - Tinfoil
0.40 mm thickness
Ø 14 mm



■ SP-131-6 1 + 2 pcs

Blue SP2 female for cast-on technique with non-precious alloys
Female keepers: 45° & 60°
NP Alloy



■ SP-131-2 1 + 2 pcs

Green LV SP2 female for bonding technique with NOBIL FIX
Female keepers: 45° & 60°
TI Alloy



■ SP-131-5 1 + 2 pcs

Red LV SP2 female for cast-on technique with precious alloys
Female keepers: 45° & 60°
HT Alloy



■ SP-431-2 1 + 1 pcs

Green LV SP2 female for post-copings and bars. Bonding technique with NOBIL FIX.
TI Alloy

ACCESSORIES



■ AC-070-AK 1 pc

LV SP2 & LV SP3 Spring pin key and activator with key cover



■ AC-071-P1 1 pc

Paralleling mandrel for: LV SP2 / LV SFE green male & female keepers



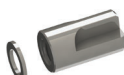
■ AC-071-P2 1 pc

Paralleling mandrel and sandblasting accessory for TI LV SP2 & LV SP3 female



■ AC-071-S 2 pcs

Soldering accessory for: LV SP2 base rings



■ AC-171-M 2 pcs + 2 SM

Impression tool for LV SP2 female and base ring analogue for LV SP2, PAL and SFE males



■ AC-171-F 2 pcs + 2 SM

LV SP2 female analogue for repair and relining



■ AC-471-M 2 pcs

Black impression tool for LV SP2, PAL and SFE base rings

EXTRACORONAL & AXIAL - LV SP2 / LV SP3

INDIVIDUAL PARTS *LVSP3*



S3-111-0 2 pcs + 2 SM

Spring pin SP3 - **AP Alloy**
H: 3.15 mm / \varnothing 3 mm
Head \varnothing 1.88 mm
Use NOBIL GRIP to avoid spontaneous unthreading



S3-111-W 2 pcs

Repair spring pin SP3 - **AP Alloy**
Head \varnothing 1.95 mm
Use NOBIL GRIP



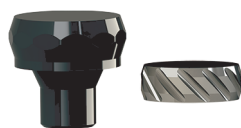
S3-111-W2 2 pcs

Repair spring pin SP3 - **AP Alloy**
Head \varnothing 2.02 mm
Use NOBIL GRIP



S3-111-L 2 pcs

Repair spring pin SP3 - **AP Alloy**
H: 3.45 mm
Use NOBIL GRIP



S3-111-2 2 + 2 pcs

LV SP3 retention part for bonding with NOBIL FIX - **Ti Alloy**
Black duplicating dummy with incorporated Space Maintainer



S3-111-3 2 pcs

LV SP3 winged retention part for acrylic fixation - **Ti Alloy**



S3-111-7 2 pcs

LV SP3 retention part for soldering with Solder Crochet - **AP Alloy**



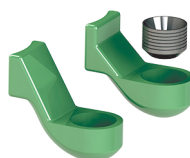
S3-111-4 2 pcs

LV SP3 circular retention for acrylic fixation - **Ti Alloy**



S3-131-6 1 + 2 pcs

Blue SP3 female for cast-on technique with non-precious alloys
Female keepers: 45° & 60°
NP Alloy



S3-131-2 1 + 2 pcs

Green SP3 female for bonding technique with NOBIL FIX
Female keepers: 45° & 60°
Ti Alloy



S3-131-5 1 + 2 pcs

Red SP3 female for cast-on technique with precious alloys
Female keepers: 45° & 60°
HT Alloy



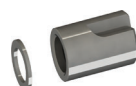
S3-171-Q 10 pcs

Space Maintainer - **IN Alloy**
0.30 mm thickness



AC-170-F 2 pcs + 2 SM

LV SP3 Female analogue for repair and relining



AC-170-M 2 pcs + 2 SM

Impression tool for LV SP3 female

ACCESSORIES



AC-070-AK 1 pc

LV SP2 & LV SP3 Spring pin key and activator with key cover



AC-170-P1 1 pc

Paralleling mandrel for LV SP3 green female keepers

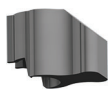


AC-170-P2 1 pc

Paralleling mandrel for SP2 & SP3 females

EXTRACORONAL & BAR LV VER / LV HOR / LV OCAD

INDIVIDUAL PARTS



VR-143-3CR 2 pcs

VR-143-3CR-Z 20 pcs

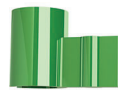
Housing - CR Alloy for LV VER MINI female
H: 5 mm | \varnothing 4.10 mm | L: 7.15 mm



VR-142-3CR 2 pcs

VR-142-3CR-Z 20 pcs

Housing - CR Alloy for LV VER STANDARD female
H: 7 mm | \varnothing 4.10 mm | L: 7.15 mm



VR-142-1 6 pcs

VR-142-1Z 25 pcs

Plastic burn-out housing LV VER MINI & STANDARD female
Use a hard alloy type 4
H: 5.50 mm | \varnothing 4.15 mm | L: 8 mm



VR-113-1 6 pcs

VR-113-1Z 25 pcs

Green burn-out LV VER MINI male
H: 3 mm | \varnothing 1.84 mm
Use a hard alloy type 4 and the AC-173-P paralleling mandrel



VR-112-1 6 pcs

VR-112-1Z 25 pcs

Blue burn-out LV VER STANDARD male
H: 5.90 mm | \varnothing 1.84 mm
45° / H Back plate: 5 mm
Use a hard alloy type 4 and the AC-173-P paralleling mandrel



VR-133-8-A 6 pcs

VR-133-8-AZ 25 pcs

Yellow LV VER / LV HOR / LV OCAD MINI females / rider - PP
H: 3 mm | \varnothing 3.30 mm
Standard retention



VR-133-8-B 6 pcs

VR-133-8-BZ 25 pcs

White LV VER / LV HOR / LV OCAD MINI females / rider - PP
H: 3 mm | \varnothing 3.30 mm
Reduced retention



VR-133-8-C 6 pcs

VR-133-8-CZ 25 pcs

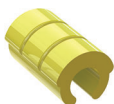
Red LV VER / LV HOR / LV OCAD MINI females / rider - PP
H: 3 mm | \varnothing 3.30 mm
Increased retention



VR-133-8-ZX 2+2+2 pcs

VR-133-8-ZY 12+8+5 pcs

Combined package LV VER / LV HOR / LV OCAD MINI females



VR-132-8-A 6 pcs

VR-132-8-AZ 25 pcs

Yellow LV VER / LV HOR / LV OCAD STANDARD females / riders - PP
H: 5 mm | \varnothing 3.30 mm
Standard retention



VR-132-8-B 6 pcs

VR-132-8-BZ 25 pcs

White LV VER / LV HOR / LV OCAD STANDARD females / riders - PP
H: 5 mm | \varnothing 3.30 mm
Reduced retention



VR-132-8-C 6 pcs

VR-132-8-CZ 25 pcs

Red LV VER / LV HOR / LV OCAD STANDARD females / riders - PP
H: 5 mm | \varnothing 3.30 mm
Increased retention



VR-132-8-ZX 2+2+2 pcs

VR-132-8-ZY 12+8+5 pcs

Combined package of LV VER / LV HOR / LV OCAD STANDARD females / riders



VR-112-1L 6 pcs

LV VER Standard Male with paralleling mandrel
H: 5 mm
 \varnothing 1.84 mm



VR-112-1L-Z 25 pcs

LV VER Male Standard with paralleling mandrel
H: 5 mm
 \varnothing 1.84 mm

EXTRACORONAL & BAR LV VER / LV HOR / LV OCAD

INDIVIDUAL PARTS



■ **HR-653-9** 6 pcs

■ **HR-653-9-Z** 25 pcs

LV HOR MINI self-isolating processing rider

L: 3 mm

H: 4.85 mm

W: 3.30 mm



■ **HR-643-3CR** 2 pcs

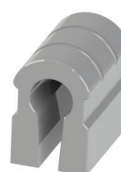
■ **HR-643-3CR-Z** 20 pcs

Housing - CR Alloy for LV HOR MINI rider, for soldering, bonding or acrylic retention

L: 3 mm

H: 2.90 mm

W: 4.10 mm



■ **HR-652-9** 6 pcs

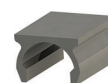
■ **HR-652-9-Z** 25 pcs

LV HOR STANDARD self-isolating processing rider

L: 5 mm

H: 4.85 mm

W: 3.30 mm



■ **HR-642-3CR** 2 pcs

■ **HR-642-3CR-Z** 20 pcs

Housing - CR Alloy for LV HOR STANDARD rider, for soldering, bonding or acrylic retention

L: 5 mm

H: 2.90 mm

W: 4.10 mm



■ **OC-653-9** 6 pcs

■ **OC-653-9-Z** 25 pcs

LV OCAD MINI self-isolating processing rider

L: 3 mm

H: 4.85 mm

W: 3.30 mm



■ **OC-643-3CR** 2 pcs

■ **OC-643-3CR-Z** 20 pcs

Housing - CR Alloy for LV OCAD MINI rider, for soldering, bonding or acrylic retention

L: 3.30 mm

H: 5.20 mm

W: 4.10 mm



■ **OC-652-9** 6 pcs

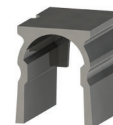
■ **OC-652-9-Z** 25 pcs

LV OCAD STANDARD self-isolating processing rider

L: 5 mm

H: 4.85 mm

W: 3.30 mm



■ **OC-642-3CR** 2 pcs

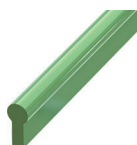
■ **OC-642-3CR-Z** 20 pcs

Housing - CR Alloy for LV OCAD STANDARD rider, for soldering, bonding or acrylic retention

L: 5.30 mm

H: 5.20 mm

W: 4.10 mm



■ **HR-612-1** 6 pcs

■ **HR-612-1-Z** 25 pcs

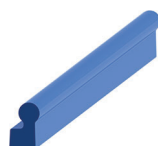
LV HOR burn-out plastic bar

Use a hard alloy type 4

L: 50 mm

Ø 1.80 mm

H: 4 mm



■ **OC-612-1** 6 pcs

■ **OC-612-1-Z** 25 pcs

LV OCAD burn-out plastic bar

Use a hard alloy type 4

L: 50 mm

Ø 1.80 mm

H: 4 mm

4° inclination

ACCESSORIES



■ **AC-173-I** 1 pc

Universal insertion tool for: LV VER LV HOR / LV OCAD females / riders



■ **AC-173-P** 1 pc

Paralleling mandrel for: LV VER MINI / STANDARD

Ø 2.35 mm



■ **AC-172-M** 2 pcs

LV VER MINI / STANDARD analogue for repairs

H: 9 mm | Ø 1.80 mm



■ **AC-674-P** 1 pc

LV OCAD paralleling mandrel
Ø 2.35 mm

SAGITTAL - LV SAG

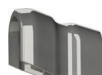
INDIVIDUAL PARTS



■ SG-355-9 6 pcs

■ SG-355-9-Z 25 pcs

LV SAG MINI duplicating accessory
Ø 1.7 mm



■ SG-345-3CR 2 pcs

■ SG-345-3CR-Z 20 pcs

Housing - **CR Alloy** for LV SAG MINI, for soldering, bonding or acrylic retention

L: 5.20 mm

H: 4.40 mm

W: 3.80 mm



■ SG-354-9 6 pcs

■ SG-354-9-Z 25 pcs

LV SAG STANDARD duplicating accessory
Ø 2.2 mm



■ SG-344-3CR 2 pcs

■ SG-344-3CR-Z 20 pcs

Housing - **CR Alloy** for LV SAG STANDARD, for soldering, bonding or acrylic retention

L: 5.70 mm

H: 5.40 mm

W: 5.70 mm



■ SG-335-9-A 6 pcs

■ SG-335-9-AZ 25 pcs

Yellow LV SAG MINI females - **POM**

H: 3.10 mm / Ø 1.7 mm

W: 2.28 mm

Normal retention



□ SG-335-9-B 6 pcs

□ SG-335-9-BZ 25 pcs

White LV SAG MINI females - **POM**

H: 3.10 mm / Ø 1.7 mm

W: 2.28 mm

Reduced retention



■ SG-335-9-C 6 pcs

■ SG-335-9-CZ 25 pcs

Red LV SAG MINI females - **POM**

H: 3.10 mm / Ø 1.7 mm

W: 2.28 mm

Increased retention



■ SG-335-9-ZX 2+2+2 pcs

Combined package of
LV SAG MINI females



■ SG-334-9-A 6 pcs

■ SG-334-9-AZ 25 pcs

Yellow LV SAG STANDARD females - **POM**

H: 4.15 mm / Ø 2.2 mm

B: 2.84 mm

Normal retention



□ SG-334-9-B 6 pcs

□ SG-334-9-BZ 25 pcs

White LV SAG STANDARD females - **POM**

H: 4.15 mm / Ø 2.2 mm

B: 2.84 mm

Reduced retention



■ SG-334-9-C 6 pcs

■ SG-334-9-CZ 25 pcs

Red LV SAG STANDARD females - **POM**

H: 4.15 mm / Ø 2.2 mm

B: 2.84 mm

Increased retention



■ SG-334-9-ZX 2+2+2 pcs

Combined package of
LV SAG STANDARD females



■ SG-315-1 6 pcs

■ SG-315-1-Z 25 pcs

Green LV SAG MINI burn-out male
H: 3.05 mm / Ø 1.7 mm

Use a hard alloy type 4 and the
universal paralleling mandrel
AC- 370-P



■ SG-315-6 2 pcs

■ SG-315-6-Z 20 pcs

LV SAG MINI male - **NP Alloy** for
cast-on technique with non-
precious alloys

H: 2.80 mm / Ø 1.7 mm

Use the universal paralleling
mandrel AC- 370-P



■ SG-314-1 6 pcs

■ SG-314-1-Z 25 pcs

Blue LV SAG STANDARD burn-out
male

H: 4 mm / Ø 2.2 mm

Use a hard alloy type 4 and the
universal paralleling mandrel
AC- 370-P



■ SG-314-6 2 pcs

■ SG-314-6-Z 20 pcs

LV SAG STANDARD male - **NP Alloy** for cast-on technique with
non-precious alloys

H: 3.76 mm / Ø 2.2 mm

Use the universal paralleling
mandrel AC- 370-P

ACCESSORIES



■ AC-370-P 1 pc

LV SAG paralleling mandrel
Ø 2.35 mm



■ AC-370-I 1 pc

Universal insertion tool for:
LV SAG females MINI &
STANDARD



■ AC-375-M 2 pcs

LV SAG MINI analogue for
repairs

H: 9.5 mm

Ø 1.7 mm



■ AC-374-M 2 pcs

LV SAG STANDARD analogue for
repairs

H: 12.8 mm

Ø 2.2 mm

AXIAL - LV PAL - LV SFE

INDIVIDUAL PARTS & ACCESSORIES



PL-434-4OR 1 pcs

PL-434-4OR-Z 20 pcs

LV PAL female - **OR Alloy** to fix in acrylic

H: 2.7 mm / Ø 2.95 mm



PL-434-4TI 1 pcs

PL-434-4TI-Z 20 pcs

LV PAL female - **TI Alloy** to fix in acrylic

H: 2.7 mm / Ø 2.95 mm



SF-444-3TI 6 pcs

SF-444-3TI-Z 25 pcs

LV SFE housing - **TI Alloy** to fix in acrylic

H: 2.65 mm / Ø 3.90 mm



AC-474-M 2 pcs + 2 SM

LV PAL / LV SFE analogue for repairs

H: 16 mm / Ø 2.25 mm



PL-414-7OR 1 pc

LV PAL / LV SFE male - **OR Alloy** for soldering

H: 2.26 mm / Ø 2.25 mm

Ø Base: 3.2 mm



PL-414-0 1 pc

LV PAL / LV SFE male - **TI Alloy**, with M2 thread

H: 3.05 mm / Ø 2.25 mm

Int. hex: 0.90 mm



PL-414-5 1 pc

LV PAL / LV SFE male - **HT Alloy** for soldering and direct casting with precious alloys

H: 2.26 mm / Ø 2.25 mm

Ø Base: 3.2 mm



PL-414-1 6 pcs

PL-414-1-Z 25 pcs

LV PAL / LV SFE male - burn-out plastic

Use a hard alloy type 4

H: 2.26 mm / Ø 2.25 mm

Ø Base: 3.2 mm



SF-114-2 1 pc

LV SFE male - **TI Alloy** for bonding

H: 3.75 mm / Ø 2.25 mm

Ø Base: 2.3 mm



SF-114-1 6 pcs

LV SFE male - burn-out plastic

Use a hard alloy type 4

H: 3.75 mm / Ø 2.25 mm

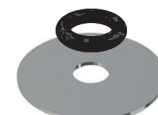
Ø Base: 2.3 mm



SP-121-1 1+1+1 pc

LV SFE male keepers - burn-out plastic

Use a hard alloy type 4 and the paralleling mandrel AC-071-P1



SF-474-Q 6 pcs

LV SFE rubber space maintainer

H: 0.70 mm / Ø 1.80 mm

SP-471-QL 1 pc

Large Space Maintainer - Tinfoil 0.40 mm thickness / Ø 14 mm



SF-434-9-A 6 pcs

SF-434-9-AZ 25 pcs

Yellow LV SFE females - **POM**

H: 2.65 mm / Ø 3.55 mm

Normal retention



SF-434-9-B 6 pcs

SF-434-9-BZ 25 pcs

White LV SFE females - **POM**

H: 2.65 mm / Ø 3.55 mm

Reduced retention



SF-434-9-C 6 pcs

SF-434-9-CZ 25 pcs

Red LV SFE females - **POM**

H: 2.65 mm / Ø 3.55 mm

Increased retention



SF-434-9-ZX 2+2+2 pcs

2 yellow females POM

2 white females POM

2 red females POM



SF-454-9 6 pcs

LV SFE duplicating accessory

Do not use a space maintainer

H: 2.90 mm / Ø 3.60 mm



SF-514-0 1 pc

LV SFE radicular post - **TI Alloy** To be cemented / M2 thread

Ø Base: 3.42 mm / H: 1.50 mm

Ø Post: 1.35 mm / L: 7 mm

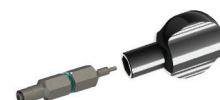


SF-514-2 1 pc

LV SFE radicular post with Ø 2.25 mm ball- **TI Alloy**

Ø Base: 3.42 mm / H: 1.50 mm

Ø Post: 1.35 mm / L: 7 mm



AC-474-I 1 pc

LV SFE insertion tool and 0.90 mm hex driver with finger protection cover

AXIAL - RADICULAR - EXTRACORONAL- SFE 50%

INDIVIDUAL PARTS



50-444-3TI 6 pcs

50-444-3TI-Z 20 pcs

LV SFE 50% housing - **TI Alloy**, to fix in acrylic

H: 1.90 mm / Ø 4.00 mm



50-414-5 1 pc

LV SFE 50% male - **HT Alloy** for soldering and direct casting with precious alloys

H: 1.85 mm / Ø 2.25 mm



50-114-2 1 pc

LV SFE 50% male - **TI Alloy** for bonding

H: 3.35 mm / Ø 2.25 mm

Ø Base: 2.30 mm



50-414-0 1 pc

LV SFE 50% male in **TI Alloy** for CAD/CAM

Ø 2.25 mm

M2 thread

Use AC-475-I screwdriver



50-434-9-A 6 pcs

50-434-9-AZ 25 pcs

Yellow SFE 50% Females POM

H: 2.25 mm / Ø 3.55 mm

Normal retention



50-434-9-B 6 pcs

50-434-9-BZ 25 pcs

White SFE 50% Females POM

H: 2.25 mm / Ø 3.55 mm

Reduced retention



50-434-9-C 6 pcs

50-434-9-CZ 25 pcs

Red SFE 50% Females POM

H: 2.25 mm / Ø 3.55 mm

Increased retention



50-434-9-ZX 2 + 2 + 2 pcs

2 yellow females POM

2 white females POM

2 red females POM



50-514-2 1 pc

LV SFE 50% radicular post with Ø 2.25 mm male

TI Alloy

Ø Base: 3.42 mm / H: 1.40 mm

Ø Post: 1.35 mm / L 7 mm



50-454-9 6 pcs

LV SFE 50% duplicating accessory. **Do not use space maintainer**

H: 1.95 mm / Ø 3.60 mm

ACCESSORIES



AC-475-I 1 pc

LV SFE 50% insertion tool and screwdriver with finger protection cover



AC-474-P 1 pc

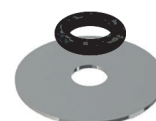
Paralleling mandrel for LV PAL / LV SFE / LV SFE 50%
Ø 2.35 mm



AC-475-M 2 pcs + 2 SM

LV SFE 50% analogue for repairs

H: 16 mm / Ø 2.25 mm



SF-474-Q 6 pcs

LV SFE rubber space maintainer
H: 0.70 mm / Ø 1.80 mm

SP-471-QL 1 pc

Large Space Maintainer – Tinfoil
0.40 mm thickness / Ø 14 mm

POSTS

LV PER

Impression and burn-out post for post-copings and post cores
Conicity according to Dr. Mooser 2°30'
Use original Maillefer-Dentsply reamers

Universal colour coding

To be used with every impression technique

Impression post is self-isolating

Even for structures with several roots



■ PR-470-CL-YE 50 pcs

Total L: 14.10 mm
Tip ø: 0.80 mm

■ PR-470-L-YE 50 pcs

Conical L: 10.70 mm
Total L: 18.60 mm
Tip ø: 0.80 mm

■ PR-470-CL-BL 50 pcs

Total L: 16.60 mm
Tip ø: 1.00 mm

■ PR-470-L-BL 50 pcs

Conical L: 12.30 mm
Total L: 22.90 mm
Tip ø: 1.00 mm

■ PR-470-CL-Z 100 pcs

Impression post combination
50 YELLOW / 50 BLUE

■ PR-470-L-Z 100 pcs

Burn-out post combination
50 YELLOW / 50 BLUE

PERIPHERALS

NOBIL FIX



Ref.: AC-000-02 5g dual syringe / 10 mixing tips

NOBIL FIX is an anaerobic bonding composite to fix precision parts in dental prostheses. It has been specially developed to fix items made of different alloys through a compressive action.

All parts to bond should have a rough, degreased and dry surface. Excess material will not harden and can't be used to control the polymerization process.

The kit contains: 5 g in dual syringe / 10 mixing nozzles

NOBIL GRIP



Ref.: AC-000-0 5 ml

NOBIL GRIP is an anaerobic adhesive to prevent possible unthreading of prosthetical components through masticatory vibrations produced in the mouth.

The material fills the space in between positive and negative threadspace. It doesn't harden, but only dries. It remains flexible so that one can always remove a secured item by NOBIL GRIP. The plastic container has 5 ml of material. Allow 3 hours for drying at mouth temperature. Store at room temperature

Keramit NP



Keramit NP is Ni and Be free, it is a biocompatible non-precious dental alloy suitable for the PFM technique and fulfills the ISO 22674 and ISO 9693-1 standards.

Keramit NP is indicated as ideal alloy for structures with milled sections with its HV10/30 of 285. The TEC values of 13.9 - 14.0 allow ceramic application of traditional materials without problems. Keramit is also available in blanks for CAD-CAM milling and as atomized powder for Laser Melting procedures.

NM BONDING



NM Bonding is a bonding agent to apply on non-precious Ti-free ceramic alloys, to improve the adhesion of ceramic and to avoid greying/greening of porcelain in thin areas. With its pink color, the aesthetical conditioner paste should be fired under vacuum at 980°C. Applied as a wash opaque, NM Bonding offers a nice gold-color as base to apply the final opaque.

6 g jar - do not reuse.

PVF



PVF is a phosphate universal investment of excellent precision for all types of alloys.

PVF is a fast investment suitable also for the conventional technique, it offers extremely smooth surfaces and an excellent precision.

PVF needs 20-25 minutes setting time (fast technique), but offers an easy devesting.

ALLOYS LV

	Colour	Au	Pt	Pd	Ag	Cu	Zn	Co	Others	Melting range	Indications	Hardening
Alloy LV-AU	Y	64	3.4		18.7	12.5	1.3		Ir	860 - 900 °C	For soldering	400°C / 15 min.
Alloy LV-HT	W	60	24.9	15					Ir	1350 - 1460 °C	Direct casting with precious alloys only	
Alloy LV-OR	Y	58.8	1.6	3.2	22.4	12.7	1.3		Ir	870 - 920 °C	For soldering	400°C / 15 min.
Alloy LV-PL	W	6	5	19.9	55	13	1		Ru	930 - 1000 °C	For soldering	400°C / 15 min.
Alloy LV-AP	W	2	9.5	37	37	12.5		2		1055 - 1130 °C		

	Colour						Melting range	Indications
Alloy LV-CR	W	Co 63	Cr 24	W 8	Mo 3		1305 - 1370 °C	TEC 13.9 - 14
Alloy LV-NP	W	Ni 72	Cr 17	Fe 10	Mn 1		1355 - 1450 °C	Direct casting with non-precious alloys only

	Colour						Melting range	Indications
Alloy LV-TI	W	Ti 90	Al 6	V 4			Do not heat	Grade 5
Alloy LV-IN	W	Fe 69	Cr 17	Ni 11	Mo 2	Mn 1	Do not heat	

SOLDERS LV

	Colour	Au	Pd	Ag	Cu	In	Zn		Melting range	Indications	Colour
SOLDER CROCHET	Y	80			13	5	2		780 - 820 °C	Precious / non-precious	YELLOW
AUCROM 1	W	76.5			X		6.5	Ni 16.6	865 - 930 °C	Precious / non-precious	WHITE
CROMO PAL	W	10	37	37	12		4		1000 - 1030 °C	Only Cr Co	WHITE

	Colour	Au	Pd	Ag	Cu	In	Zn		Melting range	Indications	Colour
UNISOLDER	LY	42		38.5		8.5	11		615 - 630 °C	Correction solder	LIGHT YELLOW
SOLDER LV 15	LY			59	16		25		655 - 680 °C	Universal	LIGHT YELLOW

MATERIALS

PP: polypropylene	POM: polyacetal	PB: pebax polyether block amide
Females of LV VER / LV HOR / LV OCAD	Females of LV SFE / LV SAG	Retention strips of LV KON
	Impression posts of LV PER	
	Females LV SFE 50% & Friction parts LV KON plus	

Legend
MP: Non Precious Alloys
NP: Non-precious Alloys
IN: Inox
TI: Titan

Nobil-Metal S.p.A.
Strada San Rocco, 28
14018 Villafranca d'Asti
Italy

Tel. +39 0141 933811
www.nobilmetal.com

INSTRUCTIONS



Please, see www.nobilmetal.com for further information on properties, dimensions, working and used material.

Some components contain Ni (IN: 11%, NP: 72%).

Any allergies to the individual components must be analyzed during the clinical project phase.

Only for professional technician and dentist use.

Dental Attachments are for single use and are supplied in NON-STERILE packaging.

Reuse may cause cross-infection.

All rights reserved.

The reproduction, even partial or only the pictures, is not allowed without prior written authorization by Nobil Metal SpA.

We reserve the right to change the programs and the construction of our products.

The features of the items shown in the pictures and the descriptions may change.